

Portuguese Wine and Vineyard Institute (IVV)



eSpatial OnDemand GIS™ enables IVV, part of the Portuguese Ministry of Agriculture, to streamline their vineyard management business processes, by implementing an organisation-wide system for the capture, maintenance and analysis of spatial and business data.

The consortium

eSpatial are working closely with other companies as part of a consortium.

- Novageo is a GIS systems development and consultancy company with significant experience in the Portuguese GIS market.
- ParaRede is a well-established Portuguese systems integration company, with extensive project experience using Java, J2EE, and Oracle.

eSpatial's role within the consortium is to provide eSpatial OnDemand GIS (formerly known as iSMART), and to support Novageo in the development of the spatial components of the system.

The solution

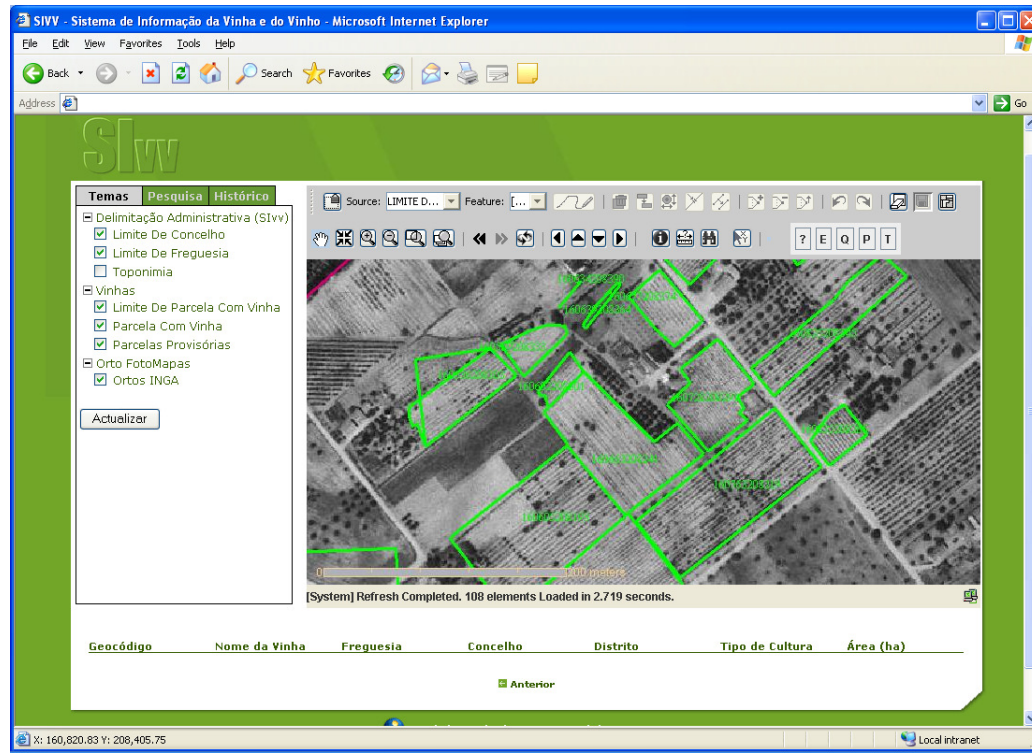
There are three main spatial components in the system:

- Online viewing.
- Online editing.
- Offline editing.

These components will be available to different user types. The online viewing component is designed to allow individual farmers to view their vineyard parcels over the internet. It also allows them to submit applications, and print information about their holdings.

The online editing component is designed for use by IVV staff, to allow full digitising of vineyard parcels. It also allows for maintenance and analysis of all related information.

The offline editing functionality is to be used by inspectors to verify what exists in the field is consistent with what exists on the system, and make amendments accordingly.

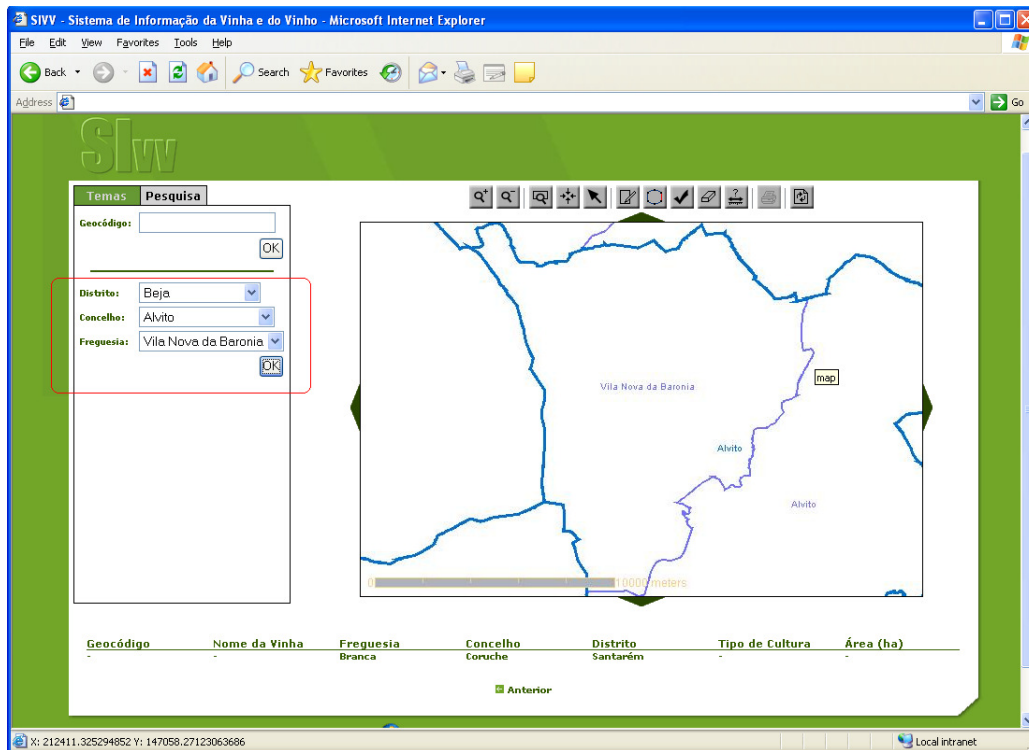


The architecture

The system is designed as a J2EE application, deployed on Oracle's 10g Application Server, backed by an Oracle 10g Database.

Benefits for IVV

- Providing a fully-integrated, complete database for all vineyard information in Portugal.
- Streamlining and closely integrating all business processes within IVV.
- Facilitating comprehensive analysis of the data.
- Allowing for compliance with EU regulations regarding payment of agricultural grants.



About eSpatial OnDemand GIS

eSpatial OnDemand GIS combines the latest innovations in software delivery and usability with the traditional performance of in-house GIS, over the web.

eSpatial OnDemand GIS is an affordable, predictable, and scalable web GIS offering which provides an ideal enterprise grade hosted services delivery platform for geospatial applications.

eSpatial Inc.

2325 Dulles Corner Boulevard, Suite 500, Herndon, VA, USA – 20171
Ph: +1 202 552 1545

eSpatial Solutions EMEA

Swords Business Park, Swords, Co. Dublin, Ireland.
Ph: +353 1 870 8800 | Fax: +353 1 870 8899 | UK: +44 845 6001472

About eSpatial

eSpatial is a leading provider of Geographic Information Systems (GIS), and a pioneer in the provision of location intelligence delivered via Software-as-a-Service (SaaS).

Our flagship product, eSpatial OnDemand GIS, is the world's first full-function available via SaaS delivery. It combines the latest innovations in software delivery and usability with the traditional performance of in-house GIS, over the web.

We are proud to work with leading technology partners such as Oracle, NAVTEQ and Digital Globe; and to count many leading organisations amongst our global customer base.

eSpatial is headquartered in Dublin, Ireland.

Email: info@espatial.com

Website: www.espatial.com