

## eSpatial OnDemand GIS™

### Transforming geographic data into business insights

eSpatial OnDemand GIS transforms data with a geographic component into easily-understood maps, charts and graphs that can be interpreted to provide actionable business insights.

Location intelligence helps organisations to understand their data in relation to geography and location. Traditionally, a location intelligence tool has been known as a Geographic Information System (GIS), and has generally taken the form of a desktop application used by GIS specialists.



### eSpatial OnDemand GIS: Transforming traditional GIS

eSpatial OnDemand GIS offers the full, rich toolset of a traditional GIS. Where it differs from traditional solutions is in the delivery: end users access the toolset via a standard web browser, with the application available either via Software-as-a-Service (SaaS), or for in-house server installation.

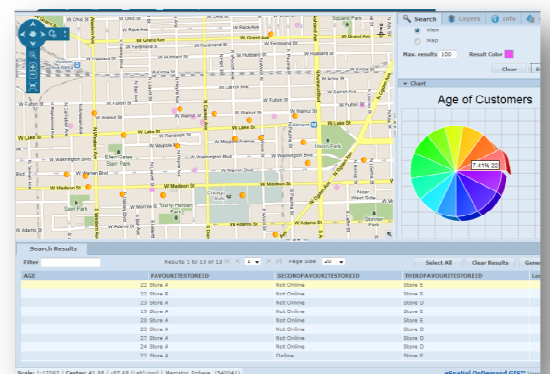
Benefits of this groundbreaking SaaS approach include:

- Cost savings: No CAPEX outlay, and affordable user-based subscription pricing.
- Flexibility & scalability: It's easy to start small and add more users as business dictates.
- No IT hassles: There's no hardware or software to buy or download, and no in-house application support required.

### Features of eSpatial OnDemand GIS

eSpatial OnDemand GIS offers a comprehensive feature set, enabling both GIS experts and newcomers to location intelligence to quickly and easily gain insight from business data.

Features include:



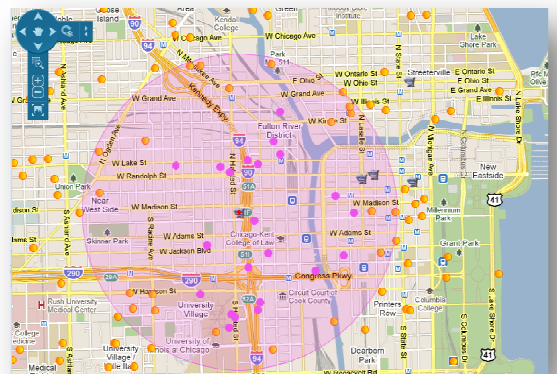
#### eSpatial Inc.

2325 Dulles Corner Boulevard, Suite 500, Herndon, VA, USA – 20171  
Ph: +1 877 365 1456

#### eSpatial Solutions EMEA

Block A1, East Point Business Park, Fairview, Dublin 3, Ireland.  
Ph: +353 1 870 8800 | Fax: +353 1 870 8899 | UK: +44 (0) 800 169 0451

- **Access base data**
  - Access standard pre-loaded data like OpenStreetMaps.
- **Load & integrate data from different sources**
  - Upload your own data using a range of business and GIS-specific file formats.
  - Connect to Web Map Services (WMS).
- **Draw & edit**
  - Work with features on a map, including editing existing features and drawing new ones.
  - Snap while editing, measuring, precision drawing.
  - Add attributes to an existing layer.
- **View & analyse**
  - Style layers and maps, including applying thematics.
  - Create and run advanced queries and generate graphs.
  - Gain direct access to Google's driving directions from within eSpatial OnDemand GIS.
- **Report, publish & export**
  - Generate reports in a variety of file formats.
  - Publication and printing options.
- **Administer your organisation's account**
  - An administrative interface to create & configure your users, groups and assign role-based permissions to groups of users, including:
    - Assignment of user-group permissions for functions, maps, data sets (map layers), queries, thematics, print layouts and functions.
    - Assignment of user-group permissions for WMS.
- **Web-based end user access**
  - Pure browser-based access: no downloads, plug-ins or applets required.
  - Accessible from supported browsers: Microsoft Internet Explorer 8 or 7, and Mozilla FireFox 3.6.
  - Support for use with touch-screen devices, including the Apple iPad and the Samsung Galaxy Tablet.



## Supported file formats

Supported file formats include:

- **Import:** CSV files with addresses or x,y locations; DGN, GEOJSON, GML, SHP, TAB.
- **Export:** BMP, GIF, JPEG/JPG, KML, KMZ, PDF, SHP, TIF/TIFF, selected feature attribute info as CSV.
- **Generate reports:** CSV, HTML, PDF, RTF, XLS.

## SaaS & server delivery

eSpatial OnDemand GIS is available via SaaS delivery, and for installation on an organisation's own in-house servers.

### SaaS delivery

When delivered via the SaaS, eSpatial OnDemand GIS offers a location intelligence toolset hosted by eSpatial, with end user access via supported web browsers.



Our secure SaaS environment is deployed on Amazon EC2, on the Fedora Linux operating system from Redhat, and with an Oracle Database. It uses an LDAP server for user authentication.

### Server delivery

Server delivery offers organisations the opportunity to host their own secure instance of eSpatial OnDemand GIS in-house on their own servers.

End users still access the application via standard web browsers. Hardware requirements include:

- **Database server:** Oracle 11g (R2), or 10g (R2). May use Oracle Spatial option, or Locator.
- **Enterprise Java application servers:** Apache Tomcat v6.0 (with Java 1.6 & Bitronix v1.2), or Oracle Weblogic v10.3 (with Java 1.6).
- **Supported operating systems:** RedHat Enterprise Linux AS 4 (Intel x86-64), Windows 2003 Server 64 bit (x86-64), Solaris 10 (SPARC).

#### eSpatial Inc.

2325 Dulles Corner Boulevard, Suite 500, Herndon, VA, USA – 20171  
Ph: +1 877 365 1456

#### eSpatial Solutions EMEA

Block A1, East Point Business Park, Fairview, Dublin 3, Ireland.  
Ph: +353 1 870 8800 | Fax: +353 1 870 8899 | UK: +44 (0) 800 169 0451



## About eSpatial

eSpatial is a leading provider of Geographic Information Systems (GIS), and a pioneer in the provision of location intelligence delivered via Software-as-a-Service (SaaS).

Our flagship product, eSpatial OnDemand GIS, is the world's first full-function available via SaaS delivery. It combines the latest innovations in software delivery and usability with the traditional performance of in-house GIS, over the web.

First established as a GIS services outfit in 1997, eSpatial is now an established presence in the GIS and location intelligence space with considerable expertise and intellectual property in spatial software use and development.

We are proud to work with leading technology partners such as Oracle, NAVTEQ and Digital Globe; and to count many leading organisations amongst our global customer base.

eSpatial is headquartered in Dublin, Ireland.

Email: [info@espatial.com](mailto:info@espatial.com)

Website: [www.espatial.com](http://www.espatial.com)

## Interested in experiencing eSpatial OnDemand GIS for yourself?

Try eSpatial OnDemand GIS for free for 14 days by signing up at: [www.espatial.com/Try](http://www.espatial.com/Try)

### eSpatial Inc.

2325 Dulles Corner Boulevard, Suite 500, Herndon, VA, USA – 20171  
Ph: +1 877 365 1456

### eSpatial Solutions EMEA

Block A1, East Point Business Park, Fairview, Dublin 3, Ireland.  
Ph: +353 1 870 8800 | Fax: +353 1 870 8899 | UK: +44 (0) 800 169 0451